

# Unit 2 Creating Systems to Manage Information



**Level 3 National in  
Information Technology**

**January 2023**  
Marking Guidance

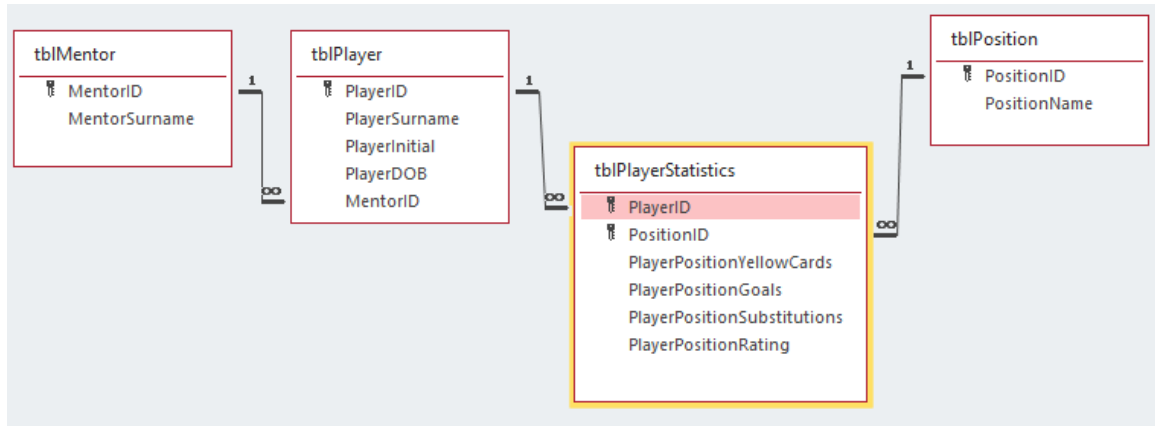
## Contents

Activity 1	.....	Page 3
Activity 2	.....	Page 4
Activity 3	.....	Page 7
Activity 4	.....	Page 10
Activity 5	.....	Page 11
Activity 6	.....	Page 12
Activity 7	.....	Page 16
Activity 8	.....	Page 17

## Activity 1 – Database Relationship Screenprint (45 mins)

### How examiners must approach marking this activity

You can only award marks for a relationship screenprint and NOT for table designs. If you have any doubt, contact your Team Leader. If ERD is at the beginning of Activity 2, you should still mark it.



<p>Trait 1</p>	<p><b>General</b></p> <ul style="list-style-type: none"> <li>Candidates should use <b>all and only</b> attributes given in the data extract</li> <li>Look at each field. Count an error with a field <b>only once</b>. For example, MentorID should be in tblMentor and tblPlayer. If it is not in both then that is <b>one</b> error</li> <li>If tables are truncated, then the fields you cannot see are missing</li> <li>If fields are truncated so long as you can determine what they are being used for then accept</li> </ul> <table border="1"> <tr> <td><b>Band 1</b></td> <td>More than 2 attributes in wrong table/missing</td> </tr> <tr> <td><b>Band 2</b></td> <td>2 attributes in wrong table/missing</td> </tr> <tr> <td><b>Band 3</b></td> <td>1 attribute in wrong table/missing</td> </tr> <tr> <td><b>Band 4</b></td> <td>All correct <b>including keys</b> and <b>no extra attributes</b> or tables</td> </tr> </table>	<b>Band 1</b>	More than 2 attributes in wrong table/missing	<b>Band 2</b>	2 attributes in wrong table/missing	<b>Band 3</b>	1 attribute in wrong table/missing	<b>Band 4</b>	All correct <b>including keys</b> and <b>no extra attributes</b> or tables
<b>Band 1</b>	More than 2 attributes in wrong table/missing								
<b>Band 2</b>	2 attributes in wrong table/missing								
<b>Band 3</b>	1 attribute in wrong table/missing								
<b>Band 4</b>	All correct <b>including keys</b> and <b>no extra attributes</b> or tables								
<p>Trait 2</p>	<p><b>Relationship lines</b></p> <ul style="list-style-type: none"> <li>Check lines only. DO NOT look at fields</li> </ul> <p><b>Relationship types</b></p> <ul style="list-style-type: none"> <li>Link on correct fields and referential integrity enforced</li> </ul> <table border="1"> <tr> <td><b>Band 1</b></td> <td> <ul style="list-style-type: none"> <li>One relationship line correct</li> <li>Ignore relationship type</li> </ul> </td> </tr> <tr> <td><b>Band 2</b></td> <td> <ul style="list-style-type: none"> <li>Minimum of two relationship lines correct</li> <li>Ignore relationship type</li> </ul> </td> </tr> <tr> <td><b>Band 3</b></td> <td> <ul style="list-style-type: none"> <li>Exactly four tables, three relationships and three relationship types present</li> <li>Two out of three relationships and relationship types correct</li> </ul> </td> </tr> <tr> <td><b>Band 4</b></td> <td> <ul style="list-style-type: none"> <li>Exactly four tables, three relationships and three relationship types present</li> <li>All relationship lines and relationship types correct.</li> </ul> </td> </tr> </table>	<b>Band 1</b>	<ul style="list-style-type: none"> <li>One relationship line correct</li> <li>Ignore relationship type</li> </ul>	<b>Band 2</b>	<ul style="list-style-type: none"> <li>Minimum of two relationship lines correct</li> <li>Ignore relationship type</li> </ul>	<b>Band 3</b>	<ul style="list-style-type: none"> <li>Exactly four tables, three relationships and three relationship types present</li> <li>Two out of three relationships and relationship types correct</li> </ul>	<b>Band 4</b>	<ul style="list-style-type: none"> <li>Exactly four tables, three relationships and three relationship types present</li> <li>All relationship lines and relationship types correct.</li> </ul>
<b>Band 1</b>	<ul style="list-style-type: none"> <li>One relationship line correct</li> <li>Ignore relationship type</li> </ul>								
<b>Band 2</b>	<ul style="list-style-type: none"> <li>Minimum of two relationship lines correct</li> <li>Ignore relationship type</li> </ul>								
<b>Band 3</b>	<ul style="list-style-type: none"> <li>Exactly four tables, three relationships and three relationship types present</li> <li>Two out of three relationships and relationship types correct</li> </ul>								
<b>Band 4</b>	<ul style="list-style-type: none"> <li>Exactly four tables, three relationships and three relationship types present</li> <li>All relationship lines and relationship types correct.</li> </ul>								

## Activity 2 – Table Structures and Validation (45 mins)

### How examiners must approach marking this activity

Trait 1	<p>Look for naming conventions and whether fields are sensible</p> <ul style="list-style-type: none"> <li>• tbl for table</li> <li>• Fields should be consistent either have spaces or not, camel case etc, so long as consistent. Check ID fields for consistency. ID fields may not match the rest of the fields but must be consistent with each other</li> <li>• If standard naming conventions are used for the tables but the fields are not consistent then cannot get higher than Band 3 for trait 1</li> <li>• If standard naming conventions are not used for table but fields consistent then cannot get higher than Band 3 for trait 1</li> </ul>
Trait 2	<p><b>Check against their ERD structure in activity 1</b></p> <ul style="list-style-type: none"> <li>• Primary and foreign keys should match what they had in activity 1</li> <li>• Band 3 can also be read as “all foreign and most primary”</li> <li>• No activity 1 then check against ERD given in solution</li> </ul>
Trait 3	<p>Look at data types.</p> <ul style="list-style-type: none"> <li>• Player DOB: Date/Time</li> <li>• Position Rating: Number</li> <li>• Number Goals: Number</li> <li>• Number Substitutions: Number</li> <li>• Number Yellow Cards: Number</li> <li>• Primary keys – any sensible</li> <li>• Foreign keys – must match primary (e.g., AutoNumber primary, Number foreign, Number primary, Number foreign etc.)</li> <li>• <b>Limited</b> means <b>more than one</b> different datatype is incorrect</li> </ul>
Trait 4	<p><b>Scenario requirements</b></p> <ul style="list-style-type: none"> <li>• The player rating must be at least one and no higher than five. One is the highest rating they can achieve</li> </ul> <p><b>Activity/testing requirements</b></p> <ul style="list-style-type: none"> <li>• A record for a player will not save without the player’s date of birth being present</li> <li>• A record for a player will not save without the player’s initial in the correct format</li> <li>• A record for a player will not save if the player is assigned an invalid mentor</li> <li>• A record for player statistics will not save if the player rating is below the accepted range</li> <li>• A record for player statistics will not save if the player rating is above the accepted range</li> <li>• A record for player statistics will not save without a valid position</li> </ul> <p><b>Watch out for screenprints that do not show the actual field the validation is applied to. If you cannot see the actual validation rule/check just the table view then don’t award any marks.</b></p>

**Just acceptable for keys**

Would need to see name of table and field name (could be written). If you cannot see the table name and field name it must only be classed as **Attempted**.

tblPlayer and field MentorID

General	Lookup
Display Control	Combo Box
Row Source Type	Table/Query
Row Source	SELECT [tblMentor].[MentorID], [tblMentor].[MentorSurname]
Bound Column	1
Column Count	2
Column Heads	No
Column Widths	1.508cm;2.54cm
List Rows	16
List Width	4.048cm
Limit To List	<input checked="" type="checkbox"/> Yes

**Just acceptable for non-keys**

Table name need not be seen, field name is enough (could be written). If you cannot see the field name it must only be classed as **Attempted**

PlayerDOB

General	Lookup
Format	Short Date
Input Mask	
Caption	
Default Value	
Validation Rule	Is Not Null
Validation Text	The player's date of birth must be present
Required	Yes

Band 1	At least 1 type of validation has been <b>attempted</b>
Band 2	All attempted or 2 types of validation are <b>correct</b>
Band 3	3 types of validation are <b>required</b> checks
Band 4	All are <b>required</b> checks

<b>Presence</b>	<b>Required check</b>
	<ul style="list-style-type: none"> <li>PlayerDOB- validation rule and suitable validation text</li> </ul>
	<b>Correct check</b>
<b>Length</b>	<ul style="list-style-type: none"> <li>PlayerDOB – validation rule without suitable validation text or Required set to Yes</li> </ul>
	<b>Attempted</b>
	<ul style="list-style-type: none"> <li>Presence check on any field other than primary keys or PlayerDOB using a validation rule or required set to yes</li> </ul>
<b>Value lookup or Range</b>	<b>Required check</b>
	<ul style="list-style-type: none"> <li>PlayerPositionRating minimum of 1 and maximum of 5</li> <li>Combo box (does not need to have limit to list set to Yes)</li> <li>Validation rule e.g., between 1 and 5, with validation text</li> </ul>
	<b>Correct check</b>
	<ul style="list-style-type: none"> <li>PlayerPositionRating                             <ul style="list-style-type: none"> <li>Incorrect range e.g., minimum 1 and maximum 6</li> <li>Validation rule with no validation text</li> </ul> </li> </ul>

		<ul style="list-style-type: none"> <li>○ If a combo used may show you in datasheet view rather than design view must see all the values.</li> </ul>		
		<b>Attempted</b>		
		<ul style="list-style-type: none"> <li>• Combo box in datasheet view but cannot see ALL of the items</li> <li>• Any other value lookup/range that works</li> </ul>		
	<b>Table lookup</b> Must be from design view	<b>Required check</b>	<ul style="list-style-type: none"> <li>• A lookup from any of their foreign keys to their primary keys</li> <li>• Limit to list set to Yes</li> <li>• Row source may be truncated but you should still see the name of the table in the select statement e.g. [tblMentor]</li> </ul>	
		<b>Correct check</b>	<ul style="list-style-type: none"> <li>• A lookup from any of their foreign keys to their primary keys</li> <li>• Limit to list is No</li> <li>• Row source may be truncated but you should still see the name of the table in the select statement e.g. [tblMentor]</li> </ul>	
		<b>Attempted</b>	<ul style="list-style-type: none"> <li>• Table lookup that is invalid e.g., looking up to the key in its own table.</li> </ul>	
		<b>Format</b>	<b>Required check</b>	<ul style="list-style-type: none"> <li>• Correct input mask (or equivalent) for PlayerInitial &gt;L (may have ;; after it etc.)</li> </ul>
			<b>Correct check</b>	e.g., >L<
			<b>Attempted</b>	
			<ul style="list-style-type: none"> <li>• Suitable format check on any <b>TEXT</b> field</li> </ul>	

## Activity 3 – Queries and Report (40 minutes)

### How examiners must approach marking this activity

<b>Trait 1</b>	<p>This trait focusses on the candidate being able to recognise the fields that will be required to produce the results requested.</p> <p>There are <b>twelve</b> points in total.  <b>One</b> point is awarded for each field that appears in the query grid up to <b>twelve</b>. <b>NOTE POINTS ARE NOT MARKS</b></p>
<b>Trait 2</b>	<p>This trait focusses on the candidate being able to use sort(s), criteria and calculations.</p> <p>There are <b>twelve</b> points in total  <b>One</b> point is awarded for each of the points achieved.</p> <p>If there is only one big table used for query B and/or report, then the candidate cannot get past top of band 2. In the examiner record, award all the points that would have been achieved to get the suggested mark and band but ensure you take it into account for the given mark i.e. override the suggested mark and explain why in the comment box</p>
<b>Trait 3</b>	<p>This trait focusses on the candidate being able to display:</p> <ul style="list-style-type: none"> <li>• <b>only</b> what has been requested</li> <li>• in a manner that would aid readability and understanding of data (ordering of columns in queries, no truncation of data, only what has been asked to be displayed is displayed etc.)</li> </ul> <p>There are <b>twelve</b> points in total  <b>One</b> point is awarded for each of the points achieved.</p>

<b>Query A</b>	
Create a query to display a list of players who have a rating of at least one and no more than three. It must show the player surname, date of birth, position and rating. It must be sorted from youngest to oldest player.	
<b>Trait 1 Any view</b>	PlayerSurname(1) PlayerDOB (1) Position (ID or name) (1) PositionRating (1)
<b>Trait 2 Design view</b>	If there is only one big table used for query B and/or report, then cannot get past top of band 2  PlayerDOB has descending sort (1) PositionRating between 1 and 3 inclusive (1)

<b>Trait 3</b>	<p>Ordering of columns is appropriate (1)                  No truncation (datasheet view field names and data) (1)                  These fields <b>only</b> are displayed (1)</p> <ul style="list-style-type: none"> <li>• PlayerSurname</li> <li>• PlayerDOB</li> <li>• Position (ID or Name)</li> <li>• PositionRating</li> </ul> <p><b>Addition</b>                  This point can only be awarded <b>once</b> throughout the entire activity.                  At least one generated field named sensibly (in this query or the report) (1)</p>
----------------	--

<b>Query B</b>	
	<p>(b) Create a query that will calculate and display the:</p> <ul style="list-style-type: none"> <li>• age of the players, for example 16</li> <li>• number of players for each age</li> <li>• number of yellow cards for each age</li> <li>• highest number of goals for each age.</li> </ul>
<b>Trait 1</b>	<p><b>Design view only</b></p> <p>Sensible field used in the calculation for Age Group (1)                  Sensible field used in the calculation for Number of Players (1)                  Sensible field used in the calculation for Number of Yellow Cards (1)                  Sensible field used in the calculation for Highest Number of Goals (1)</p>
<b>Trait 2</b>	<p>If there is only one big table used for query B and/or report cannot get past top of band 2.</p> <p>Age Group – difference between today’s date and the PlayerDOB correctly calculated (1)                  Age Group – difference is an integer year (1)                  Age Group – fully correct (achieved both of the above) (1)                  Number of Players – a count on any suitable field (1)                  Number of Yellow Cards – Sum of NumberYellowCards (1)                  Highest Number of Goals – Max of PlayerPositionGoals</p>
<b>Trait 3</b>	<p>Ordering of columns is appropriate (1)                  No truncation (datasheet view - field names and data) (1)                  These fields <b>only</b> should be displayed (1)</p> <ul style="list-style-type: none"> <li>• Age Group</li> <li>• Number of Players</li> <li>• Number of Yellow Cards</li> <li>• Highest Number of Goals</li> </ul> <p><b>Addition</b>                  This point can only be awarded <b>once</b> throughout the entire activity.</p> <ul style="list-style-type: none"> <li>• At least one generated field named sensibly (in this query or the report) (1)</li> </ul>



**Report**

(c) Create a report that shows the statistics for each player who has played in more than one position.

Display a suitable report title.

For each player display:

- the surname
- the initial
- the date of birth

Calculate and display:

- the number of positions they have played in
- the best rating, they have achieved
- the total number of yellow cards they have received

The report must fit on one page.

**Trait 1**

Surname (1)  
 Initial (1)  
 PlayerDOB (1)  
 Field that could be used in calculation for the number of positions per position(1) **(Field name or asterisk on report or could be part of a query)**  
 PositionRating used in the calculation for best rating (1)  
 PlayerPositionYellowCards used in the calculation for number of yellow cards (1)

**Trait 2**

If there is only one big table used for query B and/or report, then cannot get past top of band 2

- Number of positions calculated (COUNT) (1)
- Best rating – MIN of position rating (1)
- Number of yellow cards – SUM of yellow cards (1)
- Number of Positions >1 or equivalent

**Trait 3**

**From any view**  
 Title is appropriate (1)  
 Labels good (1)

**PDF**  
 No truncation (1)  
 Report is fit for purpose (1)  
 Report fits on one page (1)

**Additional**  
 This point must only be assigned once. If it has already been awarded in Query A or Query B, then do not award again here.

- At least one generated field named/labelled sensibly (1)

## Activity 4 – Testing (20 minutes)

### How examiners must approach marking this activity

#### Tests to be carried out

1. A record for a player will not save without the player's date of birth being present
2. A record for a player will not save without the player's initial in the correct format
3. A record for a player will not save if the player is assigned an invalid mentor
4. A record for player statistics will not save if the player rating is below the accepted range
5. A record for player statistics will not save if the player rating is above the accepted range
6. A record for player statistics will not save without a valid position.

The descriptions given here are **FOR THE TOP OF THE BAND**.

Place each test in the **BEST FIT** for the band.

For example, if the candidate does not meet all the descriptors you can still place in that band providing they meet most of what is there (i.e., sounds like a better fit in that band than the band below it). **Overall, it is possible to get the full 6 marks even with some weaknesses.**

<b>Band 1</b>	<ul style="list-style-type: none"> <li>• The test will not be from the tests given or it is from the list but inappropriate</li> <li>• There will be no test data, or it will not relate to the test being carried out</li> <li>• Expected results may be inappropriate</li> <li>• Errors may be present that have not been identified</li> <li>• Do not take type of test into account – we know what they are testing</li> </ul>
<b>Band 2</b>	<ul style="list-style-type: none"> <li>• The test will be from the tests given, but it may not be entirely appropriate</li> <li>• There will be test data, but it may be incomplete or general e.g., leave surname blank rather than stating exactly what data will be used in each field or if the test data given is a copy of the test from the paper, then look for test data in the actual results</li> <li>• Expected results will be sensible but may not be detailed e.g. 'error message' rather than 'error message saying surname has to be present'</li> <li>• Actual results will be present and appropriate though data used may not match test data (or there is no test data for it to match)</li> <li>• Errors may/may not have been found or may not be understood</li> <li>• Do not take type of test into account – we know what they are testing</li> </ul>
<b>Band 3</b>	<ul style="list-style-type: none"> <li>• The test will be from the tests given and it will be appropriate</li> <li>• Test data will be specific for <b>all</b> fields in the table</li> <li>• Expected results will be specific</li> <li>• Actual results will show <b>all</b> the test data used and any relevant messages. Data used will match test data</li> <li>• Do not penalise if there are no errors and the testing is accurate</li> <li>• Errors that are present should be noticed and understood</li> <li>• Do not take type of test into account – we know what they are testing</li> </ul>

#### Overall Band and Marks

Place in the BEST FIT for the band and the mark.

## Activity 5 – Evaluation (20 minutes)

### How examiners approach marking this activity

- Read the evaluation and determine **best fit** for the band based on understanding of technical concepts and technical vocabulary
- Input the mark in that band that you think it should have
- What should be evaluated:
  - how well your database structure has minimised data duplication
  - how well your database structure meets these requirements:
    - players are assigned a position, for example, Centre Forward
    - players may be assigned more than one position during their time at the club
    - players are assigned a mentor. They stay under the care of that mentor for their entire time at the club
    - statistics are recorded about the player for each position they play in.
    - For example, they are given a player rating. This rating must be at least one and no higher than five. One is the highest rating a player can achieve.

Part A evaluation should focus purely on showcasing the candidate's knowledge and understanding of normalisation and database structure in relation to their solution. There is no need to focus on the user as that is the focus of the Part B evaluation.

<b>Band 1</b>	Will be very superficial with major omissions but with reference to the scenario somewhere
<b>Band 2</b>	Will relate aspects sensibly to their own solution though may not fully explain them.
<b>Band 3</b>	<p><b>Indicative content</b>  <i>May not cover these exactly. This is a guide. However, should not be discussing anything other than the tables. Ignore query, report and testing comments.</i></p> <p>Will discuss data duplication in terms of:</p> <ul style="list-style-type: none"> <li>• repeated player data</li> <li>• repeated mentor data</li> <li>• repeated position data</li> <li>• removing repeated data into tables whilst maintaining the links</li> </ul> <p>It needs to be clear that they are talking about their solution and not just trying to slip in technical vocabulary. Need to see clear understanding.</p> <p><b>Meeting requirements</b></p> <ul style="list-style-type: none"> <li>• Should talk about their choice of validation for the position rating</li> <li>• Should talk about using table lookup validate foreign keys</li> </ul>

## Activity 6 – Interface and functionality (70 mins)

### How examiners must approach marking this activity

<b>Trait 1</b>	<p>This is all about how the forms look, how easy they would be to use and how relevant they are to the scenario and tasks.</p> <p><b>Add referee form</b></p> <ul style="list-style-type: none"> <li>• Sensible title</li> <li>• Relevant, consistent, easy to read labels (e.g., spaces)</li> <li>• Field widths appropriate for data they will hold</li> <li>• Data input aids e.g.:             <ul style="list-style-type: none"> <li>○ instructions on how to use,</li> <li>○ asterisk(s) where data entry is required</li> <li>○ combo box to select the level number</li> <li>○ RefereeID disabled</li> </ul> </li> <li>• Save button</li> <li>• Layout good</li> </ul> <p><b>Fixture results form</b></p> <ul style="list-style-type: none"> <li>• Sensible title</li> <li>• Data input aids e.g.:             <ul style="list-style-type: none"> <li>○ instructions on how to use,</li> <li>○ asterisk(s) where data entry is required</li> <li>○ combo box to select the team</li> <li>○ all fields that should be generated disabled</li> </ul> </li> <li>• Relevant, consistent, easy to read labels (e.g., spaces)</li> <li>• Field widths appropriate for data they will hold</li> <li>• Layout good</li> <li>• These generated fields should be on the form (ignore content of fields)             <ul style="list-style-type: none"> <li>○ Result</li> <li>○ Total goals for</li> <li>○ Total goals against</li> </ul> </li> </ul>						
	<table border="1"> <thead> <tr> <th style="background-color: #cccccc;">Band</th> <th style="background-color: #cccccc;">Comments</th> </tr> </thead> <tbody> <tr> <td style="background-color: #cccccc; text-align: center;"><b>1</b></td> <td> <ul style="list-style-type: none"> <li>• Do not reflect their purpose</li> <li>• Are mostly/are default</li> <li>• Are not user friendly:                             <ul style="list-style-type: none"> <li>○ Default titles, labels and field widths</li> <li>○ No data input aids</li> <li>○ No disabled fields</li> <li>○ House style does not exist</li> <li>○ Layout poor</li> </ul> </li> </ul> </td> </tr> <tr> <td style="background-color: #cccccc; text-align: center;"><b>2</b></td> <td> <ul style="list-style-type: none"> <li>• Better matched to purpose</li> <li>• Not all default based on wizard</li> <li>• Are more user friendly (will include <b>some</b> of these):                             <ul style="list-style-type: none"> <li>○ titles relevant to purpose</li> <li>○ data input aids present e.g., asterisks, instructions though may not use combo boxes for Referee ID</li> <li>○ disabled fields</li> </ul> </li> </ul> </td> </tr> </tbody> </table>	Band	Comments	<b>1</b>	<ul style="list-style-type: none"> <li>• Do not reflect their purpose</li> <li>• Are mostly/are default</li> <li>• Are not user friendly:                             <ul style="list-style-type: none"> <li>○ Default titles, labels and field widths</li> <li>○ No data input aids</li> <li>○ No disabled fields</li> <li>○ House style does not exist</li> <li>○ Layout poor</li> </ul> </li> </ul>	<b>2</b>	<ul style="list-style-type: none"> <li>• Better matched to purpose</li> <li>• Not all default based on wizard</li> <li>• Are more user friendly (will include <b>some</b> of these):                             <ul style="list-style-type: none"> <li>○ titles relevant to purpose</li> <li>○ data input aids present e.g., asterisks, instructions though may not use combo boxes for Referee ID</li> <li>○ disabled fields</li> </ul> </li> </ul>
Band	Comments						
<b>1</b>	<ul style="list-style-type: none"> <li>• Do not reflect their purpose</li> <li>• Are mostly/are default</li> <li>• Are not user friendly:                             <ul style="list-style-type: none"> <li>○ Default titles, labels and field widths</li> <li>○ No data input aids</li> <li>○ No disabled fields</li> <li>○ House style does not exist</li> <li>○ Layout poor</li> </ul> </li> </ul>						
<b>2</b>	<ul style="list-style-type: none"> <li>• Better matched to purpose</li> <li>• Not all default based on wizard</li> <li>• Are more user friendly (will include <b>some</b> of these):                             <ul style="list-style-type: none"> <li>○ titles relevant to purpose</li> <li>○ data input aids present e.g., asterisks, instructions though may not use combo boxes for Referee ID</li> <li>○ disabled fields</li> </ul> </li> </ul>						

		<ul style="list-style-type: none"> <li>○ field widths not left at default though may not be entirely sensible</li> <li>○ some labels amended from default where appropriate</li> <li>○ Layout good in places</li> </ul>										
	<b>3</b>	<ul style="list-style-type: none"> <li>● Add Referee form fully matches purpose</li> <li>● Mostly user friendly (<b>do not need all</b> of these but a very good attempt):                             <ul style="list-style-type: none"> <li>○ relevant titles</li> <li>○ some data input aids e.g. asterisks, instructions and combo boxes field widths sensible</li> <li>○ some information shown</li> <li>○ some of the fields for calculations shown</li> <li>○ some disabled fields</li> <li>○ layout mostly good</li> </ul> </li> </ul>										
	<b>4</b>	<ul style="list-style-type: none"> <li>● Are very user friendly:                             <ul style="list-style-type: none"> <li>○ relevant titles</li> <li>○ data input aids present where suitable including combo boxes on both forms</li> <li>○ all information generated</li> <li>○ all of the fields for calculations shown</li> <li>○ all field widths sensible</li> <li>○ all fields that should be automatically generated disabled</li> <li>○ consistent house style for both forms</li> <li>○ layout very good</li> </ul> </li> </ul>										
<b>Trait 2</b>	<p><b>Add referee form</b></p> <ul style="list-style-type: none"> <li>● ID would be generated (default of AutoNumber is fine for this)</li> </ul> <p><b>Fixture results form</b></p> <p><i>Criteria</i></p> <ul style="list-style-type: none"> <li>● Combo box only shows teams for fixtures with no results</li> </ul> <p><i>Calculations</i></p> <ul style="list-style-type: none"> <li>● Result (Win, Loss, Draw)</li> <li>● Total goals for</li> <li>● Total goals against</li> </ul> <p><b>For RefereeID to be automatically generated and mark point awarded look for:</b></p> <ul style="list-style-type: none"> <li>● Add referee form bound and (New) in RefereeID field</li> <li>● Add referee form bound, missing RefereeID field but SaveRecord in code</li> <li>● Add referee form unbound – needs an appropriate append query in design view, query and SaveRecord in code</li> </ul> <table border="1"> <thead> <tr> <th>Band</th> <th>Comments</th> </tr> </thead> <tbody> <tr> <td><b>1T</b></td> <td>● RefereeID would be automatically generated</td> </tr> <tr> <td><b>2T</b></td> <td> <ul style="list-style-type: none"> <li>● RefereeID automatically generated</li> <li>● Fixture results form – may have some attempted but may not work</li> </ul> </td> </tr> <tr> <td><b>3T</b></td> <td> <ul style="list-style-type: none"> <li>● RefereeID automatically generated</li> <li>● Fixture results form - some of the criteria and calculations work as expected</li> </ul> </td> </tr> <tr> <td><b>4T</b></td> <td> <ul style="list-style-type: none"> <li>● RefereeID automatically generated</li> <li>● Fixture results form All of the criteria and calculations work as expected</li> </ul> </td> </tr> </tbody> </table>		Band	Comments	<b>1T</b>	● RefereeID would be automatically generated	<b>2T</b>	<ul style="list-style-type: none"> <li>● RefereeID automatically generated</li> <li>● Fixture results form – may have some attempted but may not work</li> </ul>	<b>3T</b>	<ul style="list-style-type: none"> <li>● RefereeID automatically generated</li> <li>● Fixture results form - some of the criteria and calculations work as expected</li> </ul>	<b>4T</b>	<ul style="list-style-type: none"> <li>● RefereeID automatically generated</li> <li>● Fixture results form All of the criteria and calculations work as expected</li> </ul>
Band	Comments											
<b>1T</b>	● RefereeID would be automatically generated											
<b>2T</b>	<ul style="list-style-type: none"> <li>● RefereeID automatically generated</li> <li>● Fixture results form – may have some attempted but may not work</li> </ul>											
<b>3T</b>	<ul style="list-style-type: none"> <li>● RefereeID automatically generated</li> <li>● Fixture results form - some of the criteria and calculations work as expected</li> </ul>											
<b>4T</b>	<ul style="list-style-type: none"> <li>● RefereeID automatically generated</li> <li>● Fixture results form All of the criteria and calculations work as expected</li> </ul>											

**Trait 3**

This trait is about validation and automation.

**Add referee form**

- Opens at a new record
- Validation to ensure the surname is present, the email address uses a valid format, the referee’s level number can be selected (**presence check for date must be in macro or code**)
- Saving includes:
  - appending valid data to the referee table
  - displaying a save message
  - displaying suitable error message(s)
  - clearing the form ready for next data entry

**Fixtures results form**

- The user should be able to select the team name from a drop down box that displays only the fixtures that do not yet have any results
- The result of the fixture should be generated and displayed as win, loss or draw for Martlepool College
  - The overall number of goals for Martlepool College should be displayed including the results of the current fixture.
  - The overall number of goals against Martlepool College should be displayed including the results of the current fixture.
  - Generated date refreshes when another team is selected and data input

Band	Comments
<b>1</b>	<p><b>Add referee form</b>                      Will be a form that may not reflect its purpose</p> <ul style="list-style-type: none"> <li>• May not open at a new record</li> <li>• RefereedID automatically generated</li> <li>• Save button present but no indication of how the save will be carried out</li> <li>• Will be mostly default</li> </ul>
<b>2</b>	Will have had a good attempt at the referee form or weaker attempts at both forms
<b>3</b>	Will have had a good attempt at the referee form and a good attempt at the fixture results form
<b>4</b>	Very little, if anything will not have been evidenced and works.

**Trait 4**

This trait is about functionality automatically awarded.

## Activity 7 – Testing (20 minutes)

### How examiners approach marking this activity

#### Tests to be carried out

1. The referee's name must be present
2. The referee's email must use a valid format
3. The level of the referee cannot be below the valid range
4. A record will save in the referee table if the referee's details are present and valid
5. The result of the fixture will be generated correctly as win, loss or draw
6. The overall number of goals for Martlepool College should be displayed including the current fixture
7. The overall number of goals against Martlepool College should be displayed including the current fixture

The descriptions given here are **FOR THE TOP OF THE BAND**.

Place each test in the **BEST FIT** for the band.

For example, if the candidate does not meet all the descriptors you can still place in that band providing, they meet most of what is there (i.e., sounds like a better fit in that band than the band below it). Overall, it is possible to get the full 6 marks even with some weaknesses.

<b>Band 1</b>	<ul style="list-style-type: none"> <li>• The test will not be from the tests given or it is from the list but inappropriate</li> <li>• There will be no test data, or it will not relate to the test being carried out</li> <li>• Expected results may be inappropriate</li> <li>• Errors may be present that have not been identified</li> <li>• Do not take type of test into account – we know what they are testing</li> </ul>
<b>Band 2</b>	<ul style="list-style-type: none"> <li>• The test will be from the tests given, but it may not be entirely appropriate</li> <li>• There will be test data, but it may be incomplete or general e.g. I will use a wrong email address</li> <li>• Expected results will be sensible but may not be detailed e.g., 'error message' rather than what the error message will say</li> <li>• Actual results will be present, and appropriate</li> <li>• Errors may/may not have been found</li> <li>• Do not take type of test into account – we know what they are testing</li> </ul>
<b>Band 3</b>	<ul style="list-style-type: none"> <li>• The test will be from the tests given and it will be appropriate</li> <li>• Test data will be specific for <b>all</b> fields</li> <li>• Expected results will be specific</li> <li>• Actual results will show <b>all</b> the test data used and any relevant messages</li> <li>• Do not penalise if there are no errors and the testing is accurate</li> <li>• Errors that are present should be noticed</li> <li>• Do not take type of test into account – we know what they are testing</li> </ul>

#### Overall Band and Marks

Place in the BEST FIT for the band and the mark.

## Activity 8 – Evaluation (20 minutes)

### How examiners approach marking this activity

- Read evaluation and determine **best fit** for band based on understanding of technical concepts and technical vocabulary
- Input the mark that best fits the evidence

What should be evaluated:

#### Referee form

- The referee's name must be present
- The referee's email address must use a valid format
- The level of the referee cannot be below the valid range
- The level of the referee cannot be above the valid range
- A record will save in the referee table if the referee's details are present and valid

#### Fixture results form

- The user should be able to select the team name from a drop down box that displays only the fixtures that do not yet have any results
- The result of the fixture will be generated correctly as win, loss or draw
- The overall number of goals for Martlepool College should be displayed including the current fixture
- The overall number of goals against Martlepool College should be displayed including the current fixture.

Part B evaluation should focus on the quality, performance, and usability of the interface through the eyes of the **user**. Part A was about structure this is about how well the database meets the requirements and what this means for the **user**.

<b>Band 1</b>	Will be very superficial with major omissions
<b>Band 2</b>	Will discuss the form(s) they have built – some aspects sensibly though may not fully explain them or relate them well to their own solution.
<b>Band 3</b>	Will discuss <b>both</b> forms. Will relate to the scenario (they do not need to explicitly mention the scenario, but you should see what they are talking about relates to the scenario). Will be able to see comments relating their solution to the <b>end user</b> and what it will mean for them.